

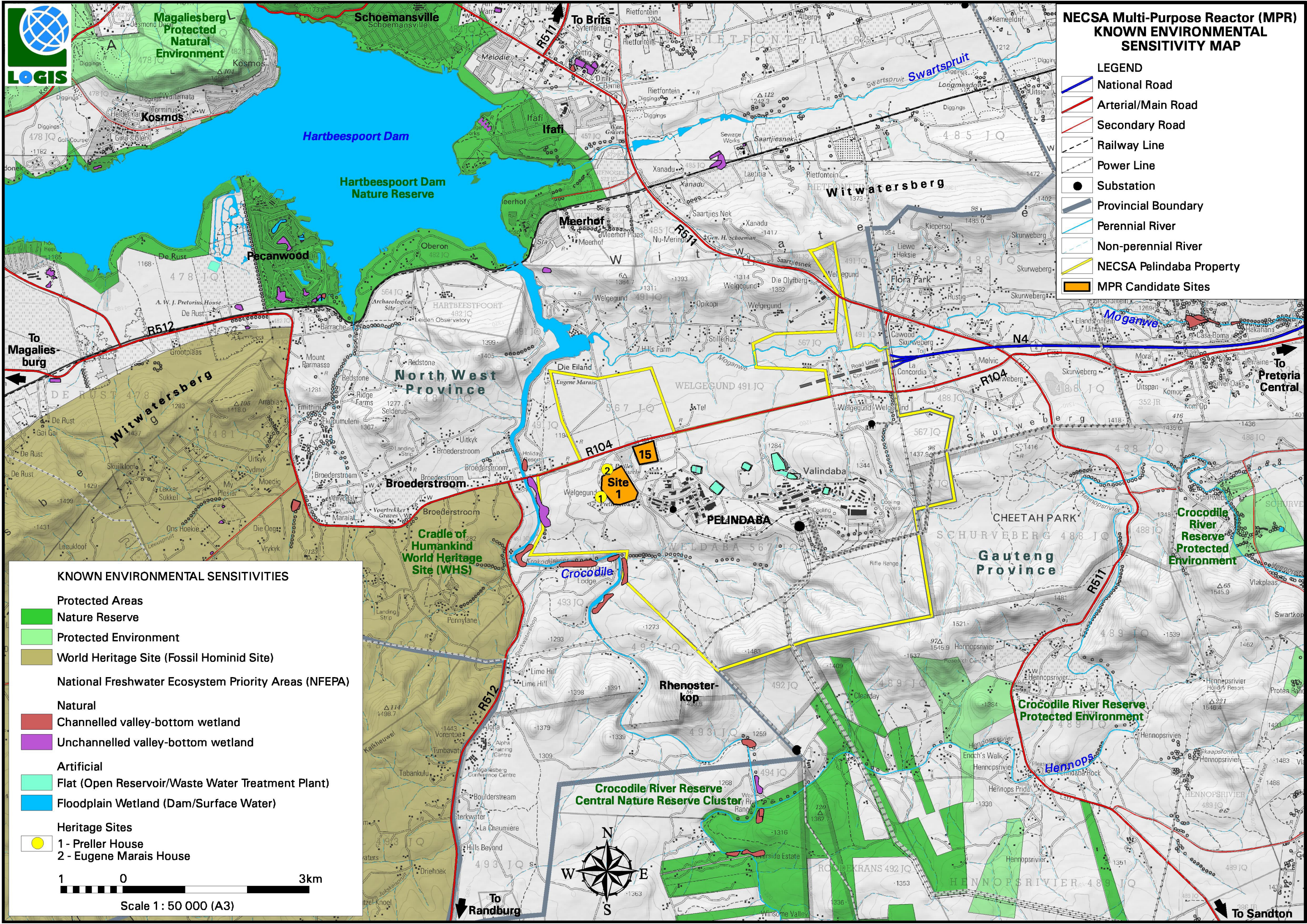
# NECSA Multi-Purpose Reactor (MPR) LOCALITY MAP

- LEGEND**
- National Road
  - Arterial/Main Road
  - Secondary Road
  - Railway Line
  - Power Line
  - Substation
  - Provincial Boundary
  - Perennial River
  - Non-perennial River
  - Dam/Lake
  - Open Reservoir/Waste Water Treatment Plant
  - World Heritage Site (Fossil Hominid Site)
  - NECSA Pelindaba Property
  - MPR Candidate Sites

1 0 3km  
Scale 1 : 50 000 (A3)







**NECSA Multi-Purpose Reactor (MPR)  
KNOWN ENVIRONMENTAL  
SENSITIVITY MAP**

- LEGEND**
- National Road
  - Arterial/Main Road
  - Secondary Road
  - Railway Line
  - Power Line
  - Substation
  - Provincial Boundary
  - Perennial River
  - Non-perennial River
  - NECSA Pelindaba Property
  - MPR Candidate Sites

- KNOWN ENVIRONMENTAL SENSITIVITIES**
- Protected Areas**
- Nature Reserve
  - Protected Environment
  - World Heritage Site (Fossil Hominid Site)
- National Freshwater Ecosystem Priority Areas (NFEPA)**
- Natural
  - Channelled valley-bottom wetland
  - Unchannelled valley-bottom wetland
- Artificial**
- Flat (Open Reservoir/Waste Water Treatment Plant)
  - Floodplain Wetland (Dam/Surface Water)
- Heritage Sites**
- 1 - Preller House
  - 2 - Eugene Marais House
- 1 0 3km  
Scale 1 : 50 000 (A3)